

Stulz CRS 251 GES cyberRow Indirect Free Cooling

Specifications

Marka	Stulz
Rodzaj	CRS 251 GES cyberRow Indirect Free Cooling
Spec.	25.3kw per piece
Stock	6



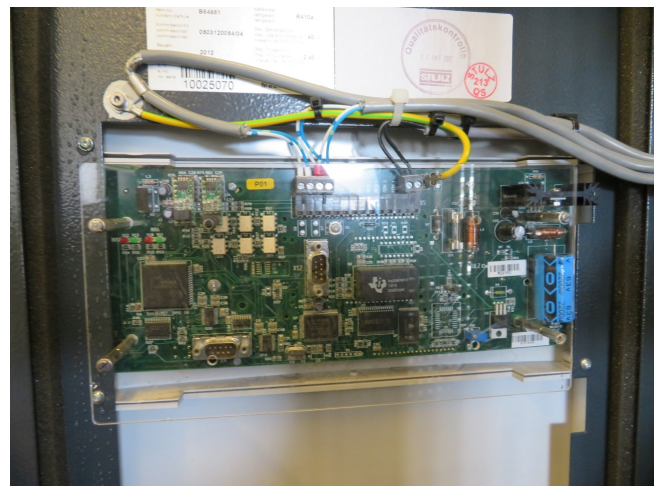
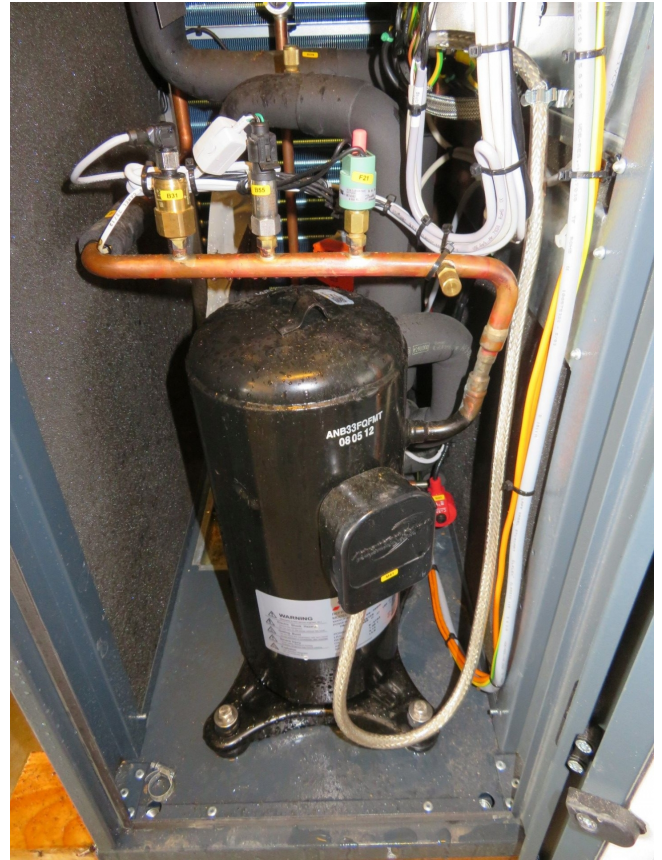
Description

Used Stulz CRS 251 GES cyberRow Indirect Free Cooling

x Stulz CRS 251 GES, build in 2012 and runs on Freon R410A. The GES system is a hybrid system combining a GS system with Indirect Free Cooling. The GES system switches from compressor mode to energy-saving mode as soon as the ambient air temperature permits. The ambient air is then used for Indirect Free Cooling. In temperate climate zones north and south of the equatorial zone, the Stulz CyberRow can exploit its energy-saving advantages to the full, reducing electricity consumption for rack air conditioning by up to 60%. Using CyberRow GES cuts operating costs and is environmentally friendly.











Cyberflow	DX				GE		CW		
	CRS/CRL 211 AS	CRS/CRL 251 AS/GS	CRS/CRL 361 AS/GS	CRS/CRL 251 GES	CRS/CRL 361 GES	CRS/CRL 210 CW	CRS/CRL 320 CW	CRS/CRL 560 CW	
Model									
Height	mm	1.950	1.950	1.950	1.950	1.950	1.950	1.950	
Depth	mm	1.200/1.375	1.175/1.375	1.175/1.375	1.175/1.375	1.175/1.375	1.175/1.375	1.175/1.375	
Width	mm	300	400	600	400	600	300	400	600
Cooling capacity	kW	22.2	25.3	27.5	25.3	27.5	22.2	25.3	56.2
Cooling capacity, indirect free condenser*	kW	—	—	—	23.3	26.5	—	—	—
Air flow*	m³/h	4.600	3.400	8.000	5.400	8.000	5.000	6.400	11.200

* Return air conditions: 35 °C / 25 % RH
DX units: condensation temperature 45 °C, CW units: water inlet 10 °C / water outlet 15 °C, glycol fraction 0 %
* Return air conditions: 35 °C / 25 % RH, water temperature 10 °C / 15 °C, 0 % glycol fraction.

